



GEMINI 1X1 HARD

RGBWW LED Panel

The power to create extraordinary.

Power your imagination to create the extraordinary on screen. With an incredibly bright output of over 3000 lux @10ft/3m, Gemini 1x1 Hard delivers the brightest and most accurate 1x1 light ever. Blast through a silk, build layers of diffusion or bounce light off a board, with precision control of hue, saturation, intensity, gels and effects, Gemini 1x1 Hard gives you the power to control and create your own extraordinary.



- The most powerful 1x1 panel
- Over 3,000 lux at 10ft/3m (Daylight) with a 46° beam angle
- Ultra-light and domed diffusers included for softer light in an instant
- Extended white color temperature range from 2,700-10,000K
- Outstanding color accuracy, TLCI/CRI 98
- Full RGBWW color gamut mixing
- Hue, Saturation and Intensity control
- Full plus/minus green color correction
- 0.1 – 100% automatic flicker-free dimming at any frame rate or shutter angle
- Wired or wireless DMX & Bluetooth remote control options
- Multi-voltage 100-240VAC; DC Input 13-33VDC
- Optional mobile battery power with 100% intensity output
- Lightweight: 13.2lbs / 6.0kg including yoke and power supply

Ultra-bright, hard and soft light

With an outstanding output of over 3000 lux @10ft/3m and a narrow 46-degree beam angle, Gemini Hard casts intense white or richly saturated color further than any other 1x1 LED panel. Remove the diffuser for an incredibly bright raw light - 20% more powerful than a 200W HMI - or use the ultralight and domed diffusers included with Gemini Hard to deliver perfect soft light with outstanding brightness.



Lightweight design - industrial strength

Tough enough to meet the rigorous demands of daily set life in the studio or on location, the compact and lightweight Gemini weighs just 13.2lbs/6kg for rapid rigging and easy transportation. Manufactured to industrial standards using durable, robust materials, Gemini is designed to protect your investment for years so you can rely on Gemini 1x1 Hard to work first time, every time.

Choice on demand for fast changing productions

The incredible power of Gemini Hard, expands the creative potential of a 1x1 panel. With more power to command and control, you can use a wide range of diffusion and creative light shaping tools, not possible with less powerful fixtures. Combined with full RGB control of over 16 million colors, 300 gels and 11 customizable special effects, the Gemini 1x1 Hard adapts to your imagination.



PART NUMBERS	EU	UK	US	Bare Ends
Standard Yoke	945-2101	945-2201	945-2301	945-2401
Pole Operated	945-2111	945-2211	945-2311	945-2411

Optical

- **LED Panel:** RGBWW
- **Beam angle (no diffuser):** 46°
- **Beam angle with Domed Diffuser:** >100°
- **Optics:** 46° custom TIR lens
- **CCT Range:** 2,700-10,000K
- **Daylight (5600K) (Lux @10ft/3m):** 3023 (No diff)
1003 (Domed diff)
- **Tungsten (3200K) (Lux @10ft/3m):** 2456 (No diff)
912 (Domed diff)
- **RED (Lux @10ft/3m):** 259 (No diff)
- **GREEN (Lux @10ft/3m):** 1099 (No diff)
- **BLUE (Lux @10ft/3m):** 202 (No diff)
- **TLCI / CRI (average):** 98
- **+/- Green-Magenta Adjustment:** Continuously Variable
- **Included Diffusion:** Ultra Light (900-3711)
Domed (900-3712)

Operational

- **Lighting Control Modes:** RGBWW/CCT/HSI/Gel/FX single dial with LCD menu control
- **Number of Gels:** 300
- **Number of Effects:** 11
- **Dimming Control:** Constant Current 0-100% Continuous
- **Remote Control Options:** DMX, RDM, Apollo CRMX*, WDMX*, Bluetooth*
- **Fan Control:** Yes
- **USB Updates:** Yes
- **Ambient Temp Operation:** - 20 to + 45
- **Estimated LED lifetime:** 50,000+ hrs
- **Preset Options:** 6x preset CCT modes with quick select buttons
6x customisable user presets with quick select buttons

* Requires optional dongle

Mechanical

- **Versions:** manual, pole operated
- **Weight*:** Manual: 13.25 lb / 6.0 kg
Pole Operated: 17.85 lbs / 8.1 kg
- **Height:** 12.6" / 320 mm
- **Width:** 12.6" / 320 mm
- **Depth:** 4.3" / 110 mm
- **Mounting method:** TVMP

* Including yoke and power supply

Electrical

- **Nominal power draw:** 200W
- **Power supply:** Yoke Mounted
- **Mains Input:** IEC, 100-240 Vac / 50-60 Hz
- **IP Rating:** IP20
- **Mobile power options [not included]:**
 - Gemini 1x1 14.4V Battery Plate (fits to yoke or directly on fixture)

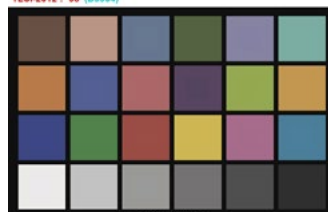
PHOTOMETRICS

Naturally accurate in any scene

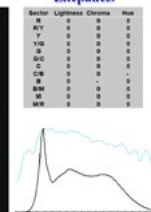
True to life color reproduction comes naturally with Gemini. With CRI and TLCI ratings of 98, Gemini 1x1 Hard delivers consistently accurate and dependable white light in any CCT from 2,700K – 10,000K with no color shift or flicker at any framerate, shutter angle, or at any intensity from 100-0.1%. You can be sure that everything in your scene, from close-up candlelight to brilliant sunlight, appears true to life and the skin tones of your on-screen talent are rendered perfectly.

DAYLIGHT	Footcandles	LUX	TUNGSTEN	Footcandles	LUX
3.3ft / 1m	2500	27207	3.3ft / 1m	2030	22101
10ft / 3m	283	3023	10ft / 3m	231	2455.7
16ft / 5m	101	1088.3	16ft / 5m	82.3	884
32ft / 10m	25	273	32ft / 10m	21	221

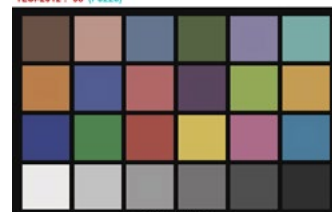
Gemini 1x1 Hard 5600K: CCT = D5904 (-0.3)
TLCI-2012: 98 (D6804)



EBU: TLCI-2012 Litepanels



Gemini 1x1 Hard 3200K: CCT = P3226 (-0.2)
TLCI-2012: 98 (P3226)



EBU: TLCI-2012 Litepanels

